

MANGUERA HIDRÁULICA FRENO

SISTEMAS DE FRENADO Y FLUIDO HIDRÁULICO AUTOMOCIÓN



| REF. | TAMAÑO | | PRESIÓN TRABAJO bar | PRESIÓN ROTURA bar | PESO Kg/mt |
|-------|--------|-------|------------------------|-----------------------|---------------|
| | Ø in | Ø ext | | | |
| J1401 | 3.2 | 10.5 | 276 | 490 | 0,910 |
| J1402 | 5 | 13 | 276 | 345 | 1,29 |

Goma sintética especial resistente al fluido hidráulico para el sistema de frenado de automoción apta para el sistema de frenado y fluido hidráulico de automoción.

Construcción: Refuerzo: Malla textil de alta resistencia. Cubierta: Goma sintética especial resistente a la abrasión, ozono y condiciones atmosféricas

Temperatura de uso: Desde -45° a $+80^{\circ}$

Factor seguridad: 1:3

Normas: SAE J1401 - TS 1046 - ISO 1307

Certificado: D.O.T y U.S. FMVSS 106

DATOS TÉCNICOS PARA EL PENSADO DE LATIGUILLOS DE FRENO

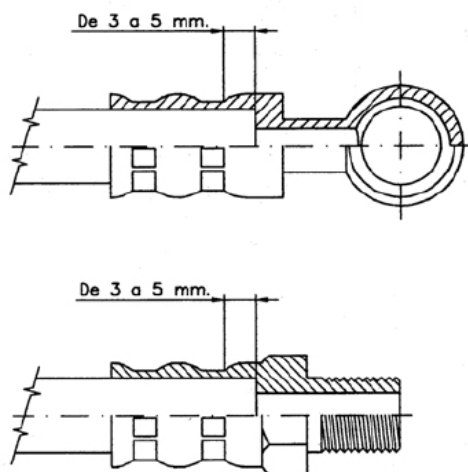
Manguera: SAE J1401 1/8"

Mordientes: 20-10/E ó 32-10/E

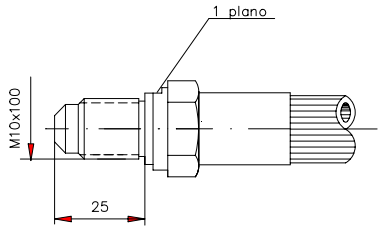
Huella de pensado: 10,8 mm.

ESQUEMA DE PENSADO

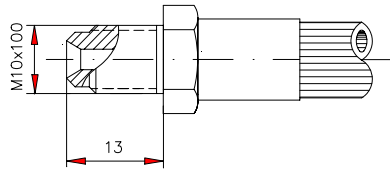
Para un correcto pensado de las conexiones de freno hay que situar la primera marca de la pensada por detrás del fondo del casquillo, a una distancia de entre 3 y 5 mm. según se detalla en el croquis.



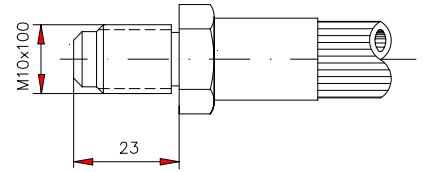
0021120-BB



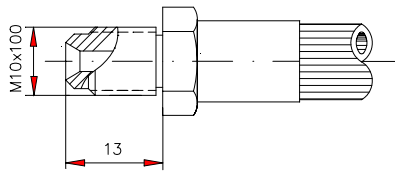
0021121-BB



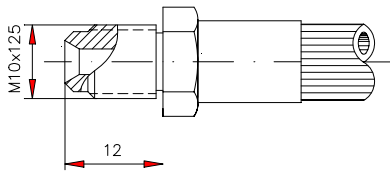
0021122-BB



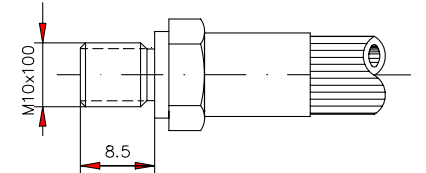
0021123-BB



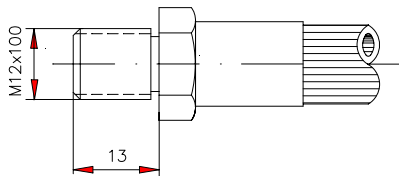
0021124-BB



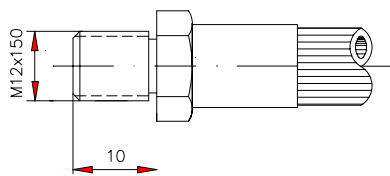
0021126-BB



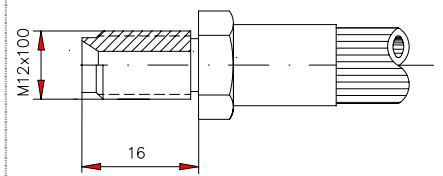
0021127-BB



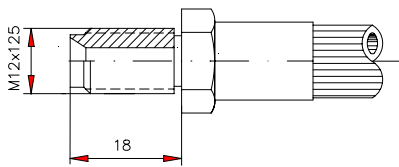
0021128-BB



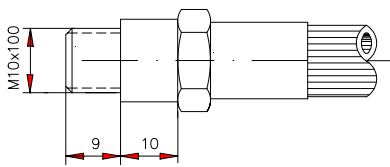
0021131-BB



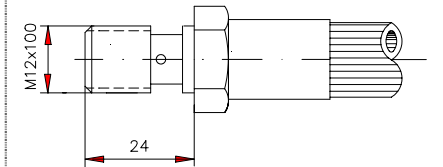
0021133-BB



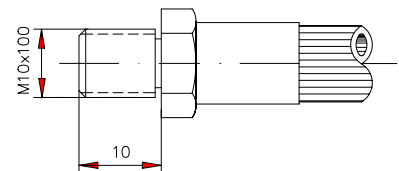
0021137-BB



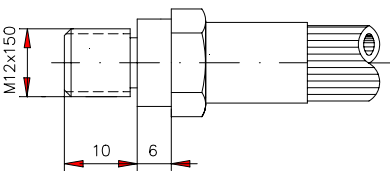
0021144-BB



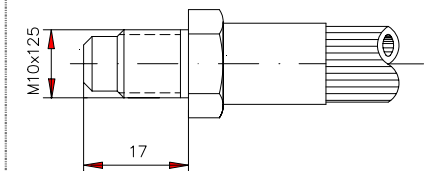
0021145-BB



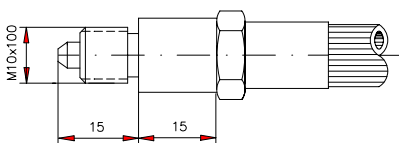
0021147-BB



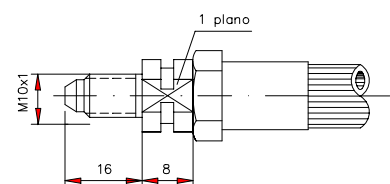
0021154-BB



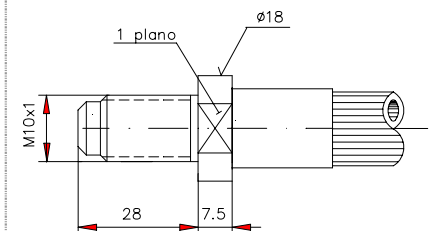
0021152-BB



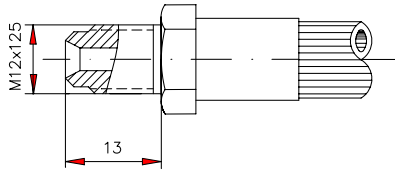
0021160-BB



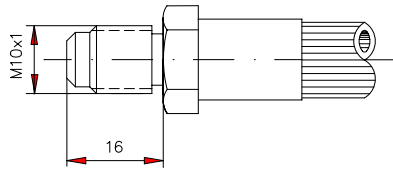
0021161-BB



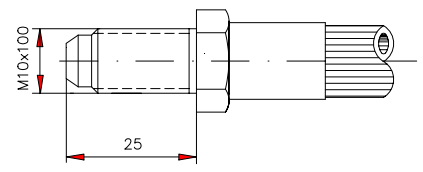
0021163-BB



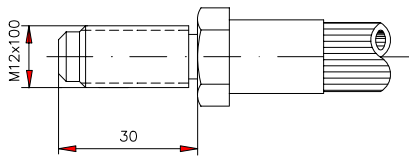
0021168-BB



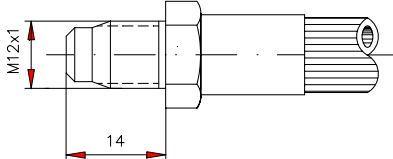
0021170-BB



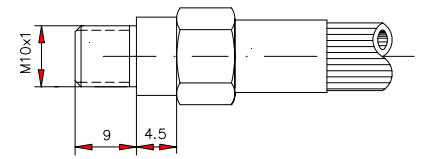
0021173-BB



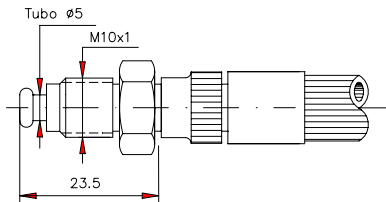
0021183-BB



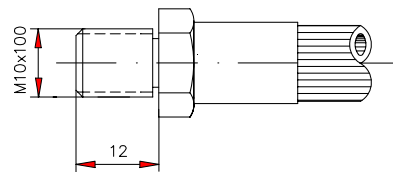
0021185-BB



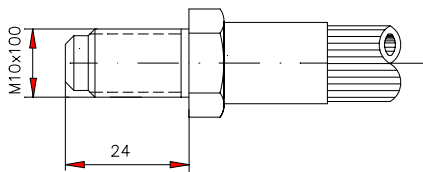
0021190-BB



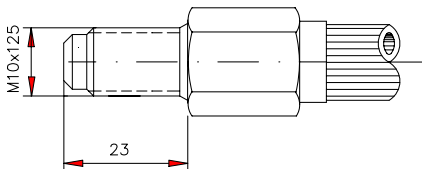
0021193-BB



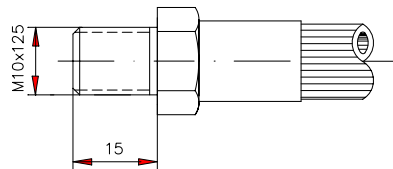
0021194-BB



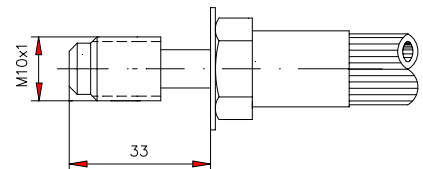
0021196-BB



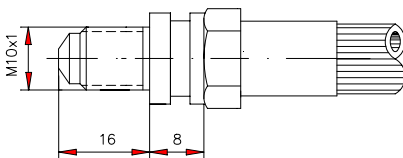
0021198-BB



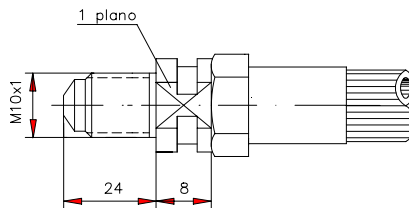
0021205-BB



0021206-BB

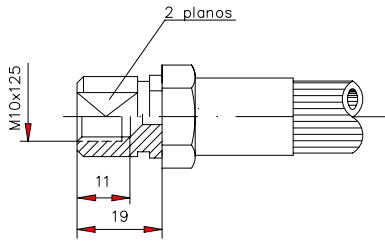


0021209-BB

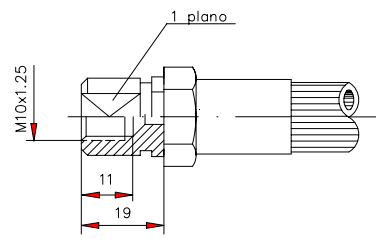


| | | |
|--------------------------|--------------------------|--------------------------|
| <p>0021101-BB</p> | <p>0021107-BB</p> | <p>0021125-BB</p> |
| <p>0021129-BB</p> | <p>0021130-BB</p> | <p>0021132-BB</p> |
| <p>0021134-BB</p> | <p>0021135-BB</p> | <p>0021138-BB</p> |
| <p>0021139-BB</p> | <p>0021149-BB</p> | <p>0021150-BB</p> |
| <p>0021157-BB</p> | <p>0021169-BB</p> | <p>0644552</p> |

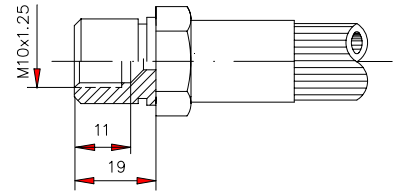
0021104-BB



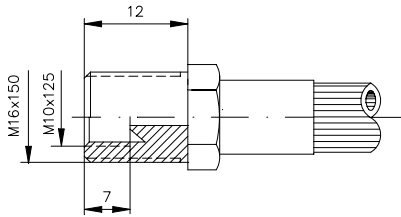
0021105-BB



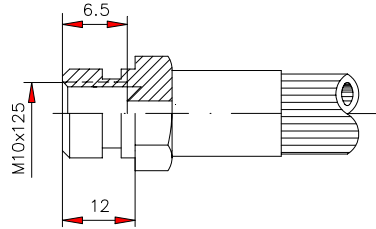
0021106-BB



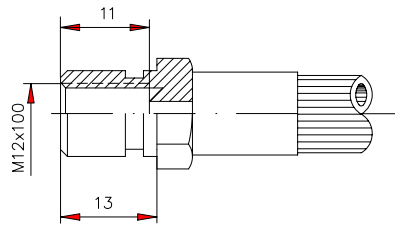
0021109-BB



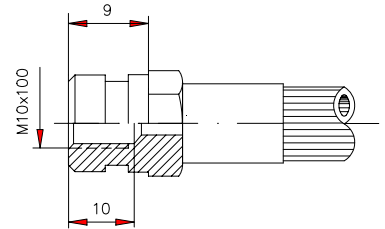
0021111-BB



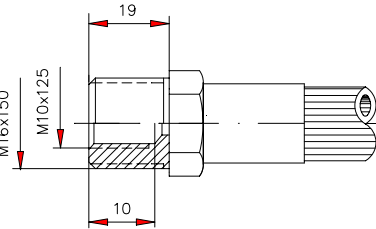
0021112-BB



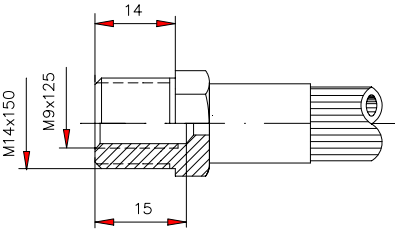
0021113-BB



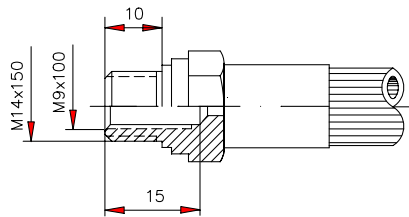
0021115-BB



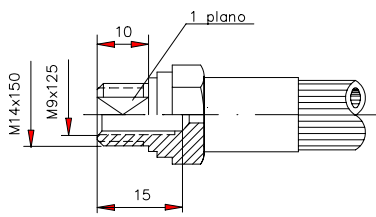
0021116-BB



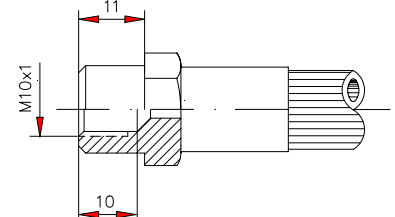
0021117-BB



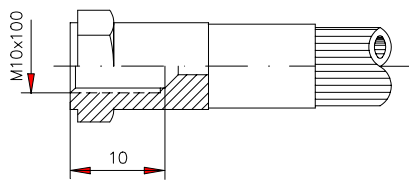
0021118-BB



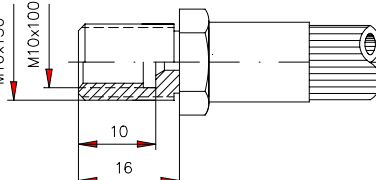
0021136-BB



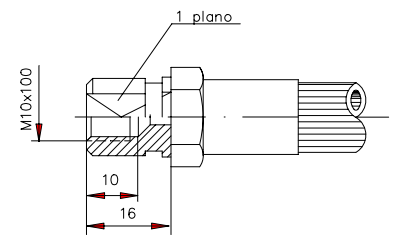
0021141-BB



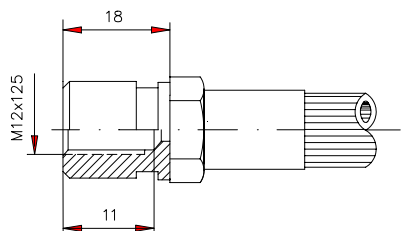
0021146-BB



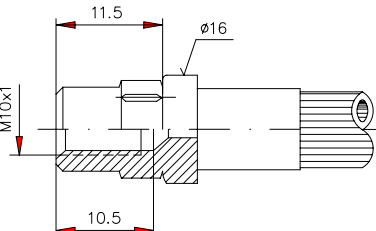
0021148-BB



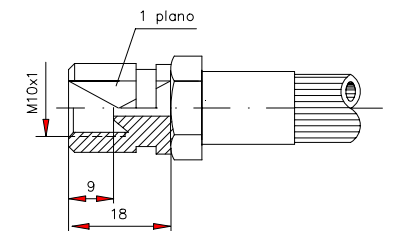
0021151-BB



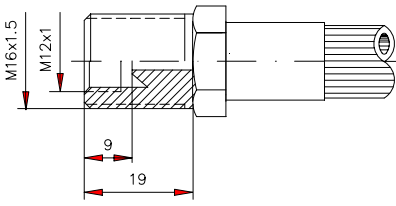
0021156-BB



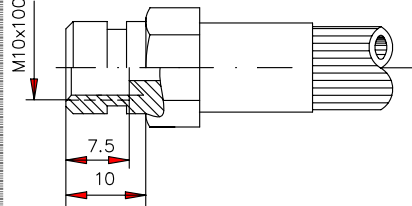
0021158-BB



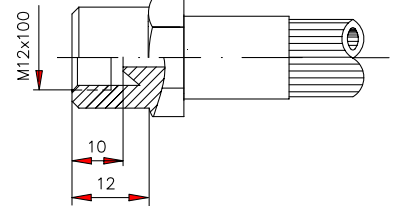
0021162-BB



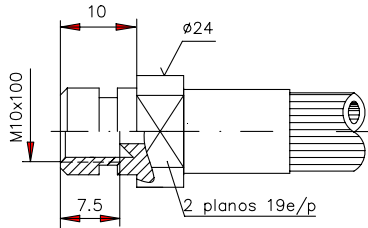
0021171-BB



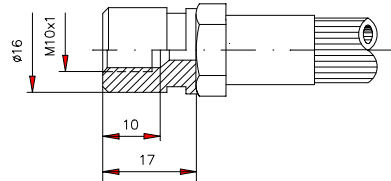
0021172-BB



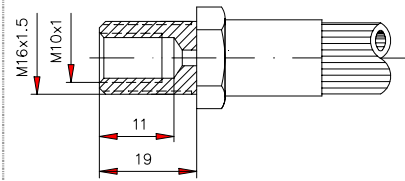
0021175-BB



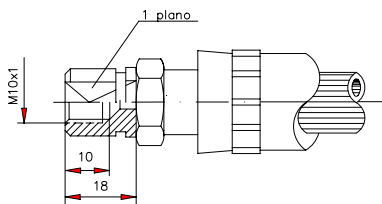
0021179-BB



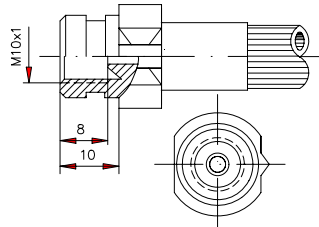
0021184-BB



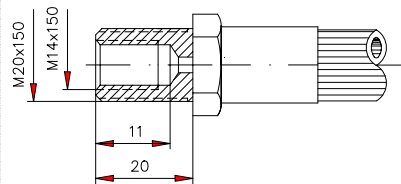
0021186-BB



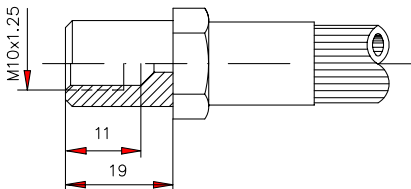
0021192-BB



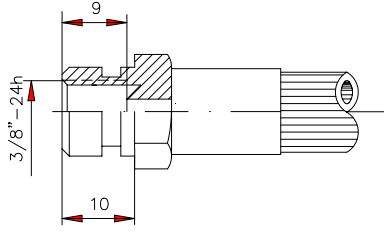
0021195-BB



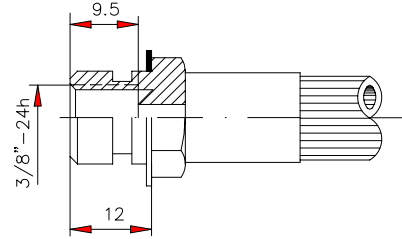
0021199-BB



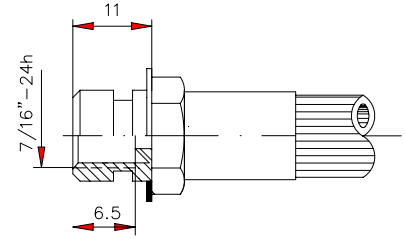
0021102-BB



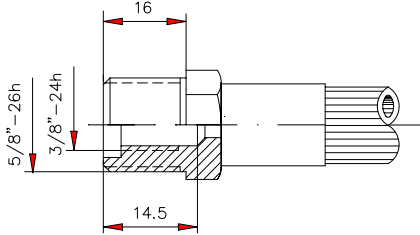
0021108-BB



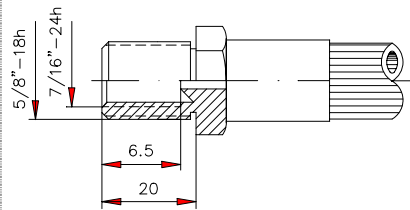
0021114-BB



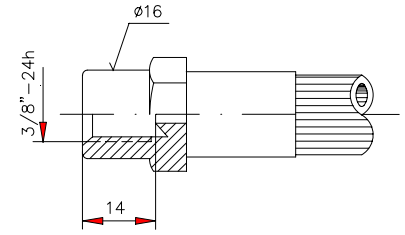
0021119-BB



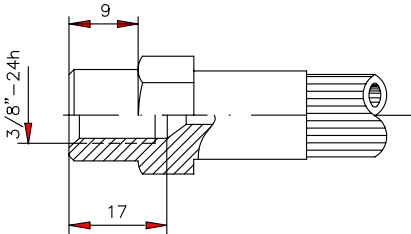
0021140-BB



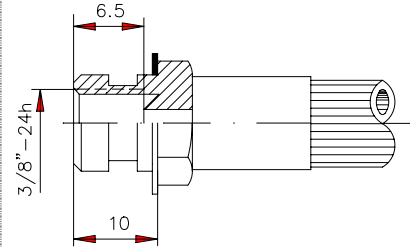
0021155-BB



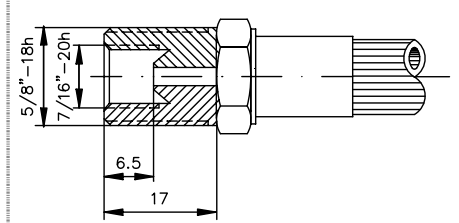
0021165-BB



0021180-BB



0021188-BB



| | | |
|--------------------------|--------------------------|----------------------------|
| <p>0021103-BB</p> | <p>0021110-BB</p> | <p>0021142-BB</p> |
| <p>0021143-BB</p> | <p>0021153-BB</p> | <p>0021159-BB *</p> |
| <p>0021166-BB</p> | <p>0021174-BB</p> | <p>0021176-BB</p> |
| <p>0021177-BB</p> | <p>0021178-BB</p> | <p>0021182-BB</p> |
| <p>0021189-BB</p> | <p>0021203-BB</p> | |