

**PORTABLE PUNCHING HEADS**


Type

**PH**

Capacity

**15 - 45 Tn**

Max. pressure

**700 bar**
**PORTABLE PUNCHING HEADS**


- ✓ Direct punching hydraulic machine designed for round, square or oblong punched holes in mild steel plate.
- ✓ Lightweight, easy transport and handling, especially in confined spaces.
- ✓ Provided with a male ball quick coupler AZ3321.
- ✓ Used in electric conducting towers, metallic structures, bridges, etc.
- ✓ For punches on all type of plates I-L-T. Depending on material, indicate if 14% or 8% inclination punchers are needed.
- ✓ Material thickness depends on its hardness and should not exceed hole diameter. Up to 12,7 mm thickness in mild steel.
- ✓ Material maximum strength: 37 kg/mm<sup>2</sup>.
- ✓ Puncher and dies are not included in the tool. Order them indicating required diameter.

Capacity	Model	Punching ø min - max	Maximum Thickness	Distance to edge	Dimensions	Weight
Tn	LARZEP	mm	mm	mm	mm	kg
<b>15</b>	<b>PH015</b>	6 - 18	7	40	80 x 170 x 280	8,5
<b>35</b>	<b>PH035</b>	6,4 - 20,6	12,7	70	120 x 250 x 360	15,0
<b>45</b>	<b>PH045</b>	8 - 24	16	110	150 x 360 x 450	40,0



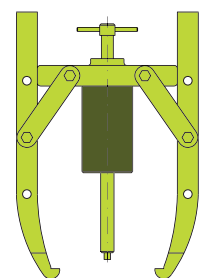
Always read the safety instructions.

## HYDRAULIC PULLERS

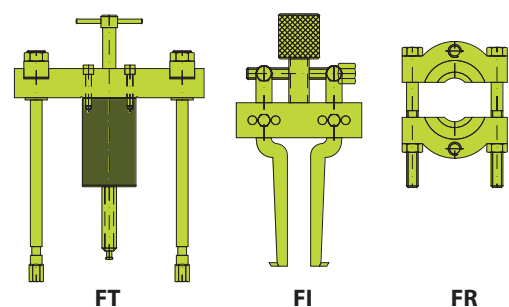


- ✓ Wide range of models from 5 to 50 Tn suitable for most maintenance pulling applications.
- ✓ All pullers are delivered in a strong wooden box for ease of transport and storage.
- ✓ Manufactured in high quality forged steel, includes hydraulic and all mechanical components.
- ✓ Hydraulic part includes: cylinder, pump, hose, pressure gauge, gauge adaptor, male coupling and hollow saddle.
- ✓ Mechanic part includes:
  - 2 Jaws puller (FX) / 3 Jaws puller (FV)
  - Complete Cross Bearing puller (FZ) that includes:
    - Simple Cross Bearing puller (FT) with long and short extension pieces,
    - Bearing Cup puller (FI), Bearing puller (FR)
- ✓ Universal puller (FU), Jaws pullers (FX and FV) and Cross Bearing puller (FT), include hydraulic and mechanical parts.

**FX - FV Jaws puller**



**FZ Cross Bearing pullers**



**HYDRAULIC PULLERS**

**UNIVERSAL HYDRAULIC PULLERS - FU** (Include hydraulic and mechanic part)

Capacity (Tn)	5	10	20	30	50
Model	FU0500	FU1000	FU2000	FU3000	FU5000
Hydraulic Part	JH00518/1	JH01204/1	JH02205/1	JH03005/1	JH06008/1
Mechanic Part	FU0500/M	FU1000/M	FU2000/M	FU3000/M	FU5000/M
Weight (kg)	20	35	80	145	315



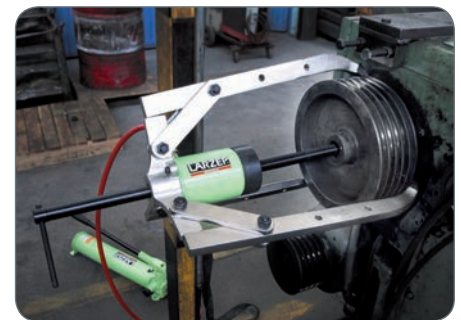
Type **FU - FV - FZ**

Capacity **5 - 50 Tn**

Max. pressure **700 bar**

**HYDRAULIC PART**

Capacity (Tn)	5	10	20	30	50
Model	JH00518/1	JH01204/1	JH02205/1	JH03005/1	JH06008/1
Cylinder	SM00518	SH01204	SH02205	SH03006	SH06008
Pump	W00307	W00307	W10707	W20707	W21207
Hose	AP2015	AP2015	AP2015	AP2015	AP2020
Gauge adaptor	AZ1502	AZ1502	AZ1502	AZ1502	AZ1502
Pressure gauge	AV10006	AV10006	AV10006	AV10006	AV10006
Male half coupling	AZ3120	AZ3120	AZ3120	AZ3120	AZ3120
Hollow saddle	-	AZ0551	AZ0552	AZ0553	AZ0556
Weight (kg)	7	8	16	21	34



**MECHANIC PART**

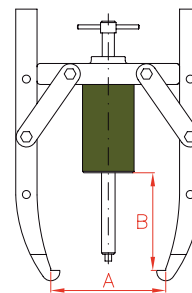
Capacity (Tn)	5	10	20	30	50	FV	FX	FZ	FT
Model	FU0500/M	FU1000/M	FU2000/M	FU3000/M	FU5000/M				
Jaw	FU0507	FU1007	FU2007	FU3007	FU5007	3	2	-	-
3 Jaws crosshead	-	-	FU2008	FU3008	FU5008	✓	-	-	-
2 Jaws crosshead	-	-	FU2009	FU3009	FU5009	✓	✓	-	-
2 and 3 Jaws crosshead	FU0508	FU1008	-	-	-	✓	✓	-	-
Arms	FU0510	FU1010	FU2010	FU3010	FU5010	6	4	-	-
Jaws bolts + Nuts	FU0511	FU1011	FU2011	FU3011	FU5011	6	4	-	-
Slinde + Handle	-	FU1012	FU2012	FU3012	FU5012	✓	✓	✓	✓
Short bolts (2)	-	14A0330	14A0074	14A0075	14A0076	✓	✓	-	-
Bearing puller	FR1000	FR1000	FR2000	FR3000	FR5000	-	-	✓	-
Gross crosshead	FU0517	FU1017	FU2017	FU3017	FU5017	-	-	✓	✓
Blank nuts (2)	FU1018	FU1018	FU2018	FU3018	FU5018	-	-	✓	✓
Washer (2)	FU1019	FU1019	FU2019	FU3019	FU5019	-	-	✓	✓
Slides (2)	FU0520	FU1020	FU2020	FU3020	FU5020	-	-	✓	✓
Fixing nuts (2)	FU0521	FU2021	FU2021	FU3021	FU5021	-	-	✓	✓
Large extenders (2)	FU0522	FU1022	FU2022	FU3022	FU5022	-	-	✓	✓
Short extenders (2)	FU0523	FU1023	FU2023	FU3023	FU5023	-	-	✓	✓
Bearing cup puller	-	FI1000	FI2000	FI3000	FI5000	-	-	✓	-
Point protector	FU0525	FU1025	FU2025	FU5025	FU5025	✓	✓	✓	✓
Connection nuts (2)	14B0050	14B0051	14B0029	14B0030	14B0031	-	-	✓	✓
Long bolts (2)	-	14A0331	14A0098	14A0099	14A0100	-	-	✓	✓
Weight (kg)	11	27	63	123	280				

✓ Included - Not available

**JAWS PULLER FX - FV**

(Include hydraulic and mechanic part)

Capacity	2 JAWS				3 JAWS			
	Model	A max.	B max.	Weight	Model	A max.	B max.	Weight
Tn	LARZEP	mm	mm	kg	LARZEP	mm	mm	kg
5	FV0500	240	225	7	FV0500	240	225	7
10	FV1000	350	320	9	FV1000	350	320	9
20	FX2000	480	340	18	FV2000	480	320	26
30	FX3000	580	390	30	FV3000	680	390	46
50	FX5000	920	727	66	FV5000	980	710	96

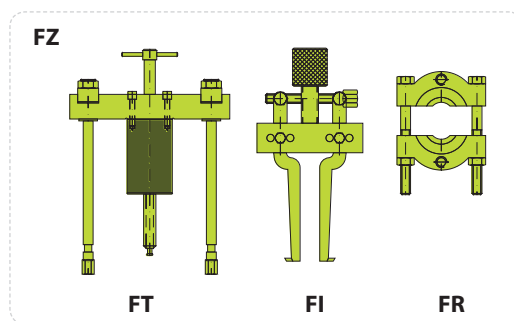


FX - FV

**FULL CROSS BEARING PULLER - FZ**

(Include hydraulic and mechanic part: FZ = FT + FI + FR)

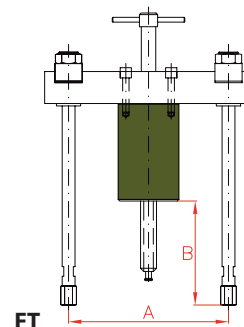
Capacity	Model	Simple Cross Bearing Puller	Bearing Cup Puller	Bearing Puller
Tn	LARZEP	FT	FI	FR
5	FZ0500	FT0500	-	FR1000
10	FZ1000	FT1000	FI1000	FR1000
20	FZ2000	FT2000	FI2000	FR2000
30	FZ3000	FT3000	FI3000	FR3000
50	FZ5000	FT5000	FI5000	FR5000



**SIMPLE CROSS BEARING PULLER - FT**

(Include hydraulic and mechanic part)

Capacity	Model	A min.	A max.	B max.	Weight
Tn	LARZEP	mm	mm	mm	kg
5	FT0500	40	185	170	7
10	FT1000	115	260	300	8
20	FT2000	170	345	265	19
30	FT3000	185	425	284	37
50	FT5000	220	580	447	71

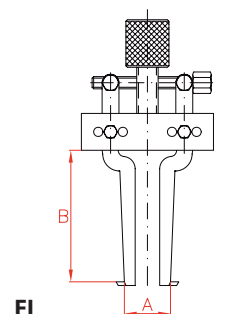


FT

**BEARING CUP PULLER - FI**

(Only mechanic part)

Capacity	Model	A min.	A max.	B	Weight
Tn	LARZEP	mm	mm	mm	kg
10	FI1000	40	145	115	2,2
20	FI2000	40	145	115	2,4
30	FI3000	60	240	150	6,0
50	FI5000	60	240	150	6,4

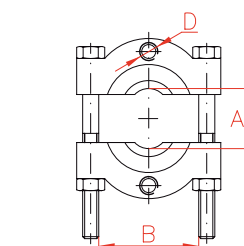


FI

**BEARING PULLER - FR**

(Only mechanic part)

Capacity	Model	A min.	A max.	B	D
Tn	LARZEP	mm	mm	mm	UN
5 - 10	FR1000	10	110	130	5/8" UNF-18
20	FR2000	12	134	155	5/8" UNF-18
30	FR3000	17	250	260	1" UNF-14
50	FR5000	35	300	300	1 1/4" UNF-12



FR



SELF-CENTERING PULLERS

SELF-CENTERING PULLERS



Type **FA**

Capacity **10 - 50 Tn**

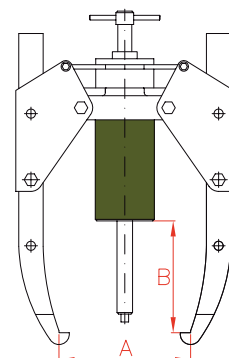
Max. pressure **700 bar**

- ✓ Self-Centering Puller available in 10, 20, 30 and 50 Tn versions.
- ✓ Ergonomic, self-centering of the jaws provides easy and safe setups on pulling jobs.
- ✓ FA Self-Centering Pullers include the hydraulic components and mechanical components.
- ✓ The large jaw opening allows bigger diameter reach and spread which makes the puller more versatile.

Model	A	B max.	Weight
LARZEP	mm	mm	kg
FA1000	50-350	320	25
FA2000	70-480	340	49
FA3000	90-680	390	76
FA5000	120-1.080	750	177

Capacity (Tn)	10	20	30	50
Model	FA1000	FA2000	FA3000	FA5000
Hydraulic part*	JH01204/1	JH02205/1	JH03005/1	JH06008/1
Mechanic part	FA1000/M	FA2000/M	FA3000/M	FA5000/M

\*See page 127.



**WEDGE SPREADER**



**WEDGE SPREADER**

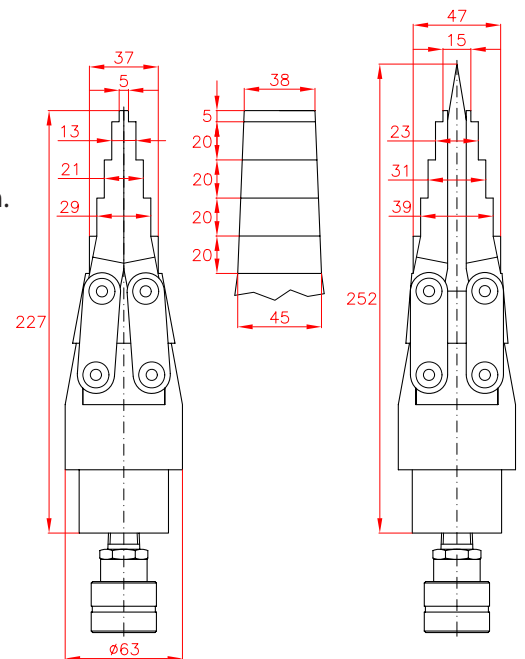
Type **CY**

Capacity **15 Tn**

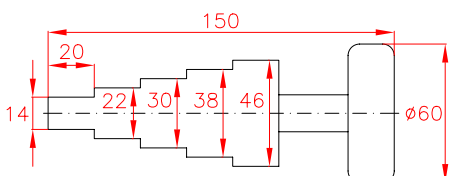
Max. pressure **700 bar**



- ✓ 15 Tn capacity wedge spreader.
- ✓ Lightweight and ergonomic tool. Easy and quick maintenance.
- ✓ Specially designed for pipe and flange repair and maintenance.  
Can be used also for seal replacement, removing elbows or heavy equipment maintenance.
- ✓ Required access gap of only 5 mm.
- ✓ Suitable for harsh offshore environment due to corrosion protection.
- ✓ Recommended to be used in pairs.
- ✓ Options: Aluminium Safety block CY15B; Handle CY15H; Kit CY1501S, with pump and 2 wedge spread



**Aluminium Safety Block CY15B as option.**



Capacity	Model	Oil Capacity	Access Gap	Max. open width	Weight
Tn	LARZEP	cm <sup>3</sup>	mm	mm	kg
15	CY1501	16	5	47	3,2

CY TOOLS



SPREAD CYLINDERS

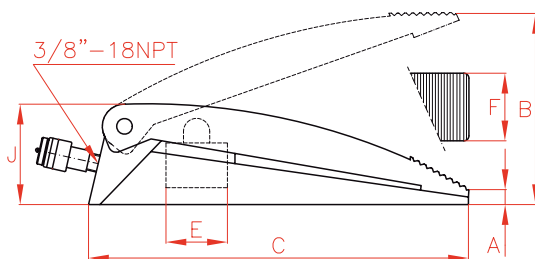


Type	<b>CY</b>
Capacity	<b>0,8 - 1 Tn</b>
Max. pressure	<b>700 bar</b>

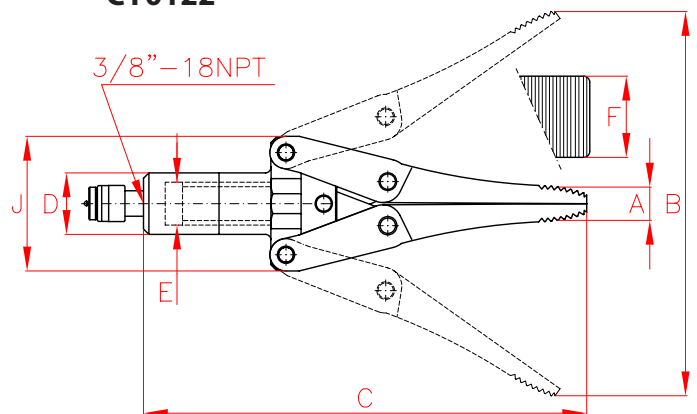


- ✓ CY series spreaders are used for many tasks in confined access situations.
- ✓ CY0109G is used for very confined situations and CY0122 is used for greater spreading distance.
- ✓ CY0109G and CY0122 models are supplied with AZ3140 high flow female couplers.
- ✓ Also available CY0109 and CY0122P fitted with AZ3240 low flow female coupler.

**CY0109G**



**CY0122**



Capacity		Stroke	Model	Oil Cap.	Area	A	B	C	D	E	F	J	Weight
Tn	kN	mm	LARZEP	cm <sup>3</sup>	cm <sup>2</sup>	mm	mm	mm	mm	mm	mm	mm	kg
1	10	75	<b>CY0109G</b>	10	7	15	90	168	-	29	55	55	2
0,8	8	189	<b>CY0122</b>	63	11,3	31	220	382	50	38	50	124	6

## HYDRAULIC NUT SPLITTERS



- ✓ Designed to work in two different ways, depending on the material grade of the nuts, either cutting or deforming them, allowing nut removal.
- ✓ CN0024 Model with integral pump, provides more confort.
- ✓ CN0224 Model especially designed to cut guard rail nuts.
- ✓ CN0324 Model, with open design, especially suitable for limited access situations.
- ✓ Plastic carry box included for easy transport and tool protection.
- ✓ Relief valve on CN0024 to avoid overloading.
- ✓ All models are provided with a male ball quick coupler AZ3321.

Model	Capacity	Volume	Length	Weight	Quality			Minimun	Replacement Blade
					12.9	8.8	5.6		
LARZEP	kN	cm <sup>3</sup>	mm	kg	12.9	8.8	5.6	ASTM A 194	LARZEP
CN0024	135	-	471	4,8	M24 7/8"	M27 1"	M27 1"	M12 1/2"	CRN24
CN0152	437	296	368	14,0	M52 2"	M52 2"	M52 2"	M27 1"	CRN33-52
CN0180	1.134	479	435	40,0	M80 3"	M80 3"	M80 3"	M68 2-1/2"	CRN0180
CN0224	135	47	207	3,7	M24 7/8"	M24 7/8"	M24 7/8"	M10 3/8"	CRN0224
CN0233	345	156	270	12,2	M33 2"	M36 1-1/4"	M36 1-1/4"	M24 7/8"	CRN0233
CN0324	135	49	296	5,0	-	M24 7/8"	M24 7/8"	M10 3/8"	CRN0324





**HAB1102**

Battery Powered Portable Hydraulic Pump



P.101

**Z12107**

Air Hydraulic Pump



P.86

**HYDRAULIC NUT SPLITTERS**



Type

**CN**

Capacity

**13 - 113 Tn**

Nut

**M10 - M80 mm**

Max. pressure

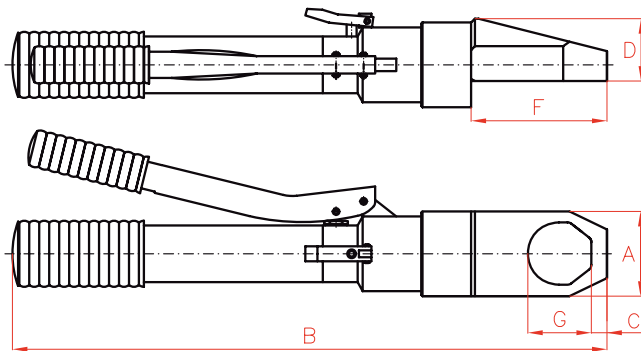
**700 bar**



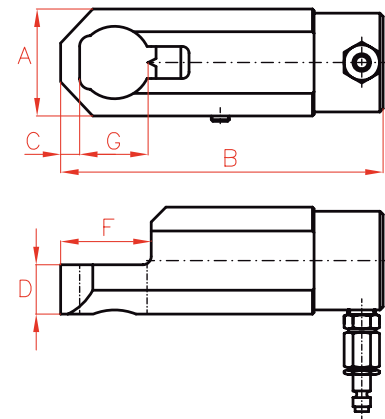
**WARNING**

The tool cuts materials with a resistance lower than 500 N/mm<sup>2</sup> and deforms all materials up to a resistance of 1.250 N/mm<sup>2</sup>.

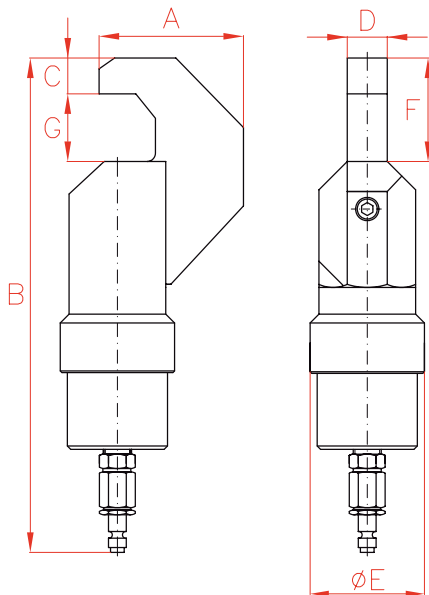
**CN0024**



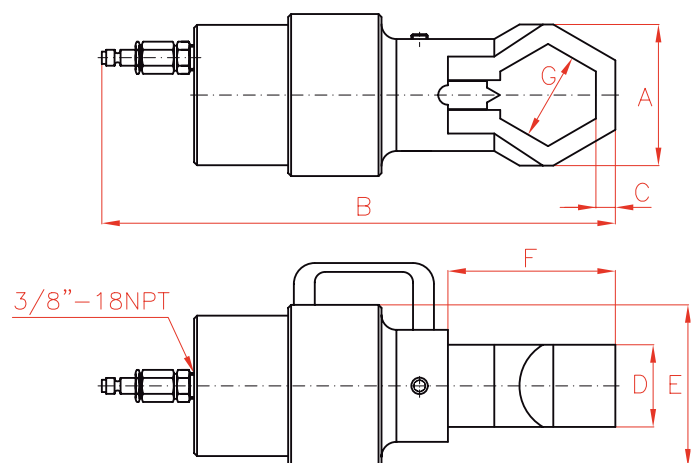
**CN0224-CN0233**



**CN0324**



**CN0152-CN0180**



Model	A	B	C	D	E	F	G
LARZEP	mm	mm	mm	mm	mm	mm	mm
CN0024	68	471	12,5	51	-	108	48
CN0152	131	368	27	55	120	136	83
CN0180	185	435	37	90	200	202	120
CN0224	65	207	12	30	-	56	40
CN0233	106	270	24	55	-	84	59
CN0324	87	296	22	24	69	62	38


Model	Nut	Across Flats
LARZEP	ASTM A 194	mm
CN0024	M12 - M27	19 - 41
CN0152	M27 - M52	41 - 80
CN0180	M68 - M80	100 - 115
CN0224	M10 - M24	17 - 36
CN0233	M24 - M36	36 - 55
CN0324	M10 - M24	17 - 36

**HYDRAULIC CHAIN CUTTERS**



- ✓ Maximum working pressure 700 bar.
- ✓ CK0016 model includes an integral built-in hand pump.  
Other models are powered by an external hand, air, electric, or petrol pump.
- ✓ CK0216, CK0230 and CK0250 models are double acting, for fast retraction.
- ✓ CK0116 and CK0216 are not equipped with handle.
- ✓ All models are provided with a male ball quick coupler AZ3321.
- ✓ Available battery powered portable pump HAB1102.

**HAB1102**  
Battery Powered Portable Hydraulic Pump




P.101

**Z12107**  
Air Hydraulic Pump



P.86

**HBM**  
Manual Powerpack

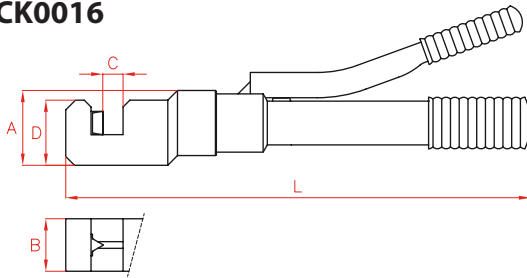


P.88

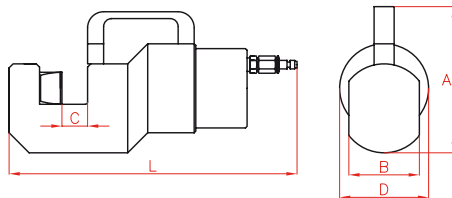


HYDRAULIC CHAIN CUTTERS

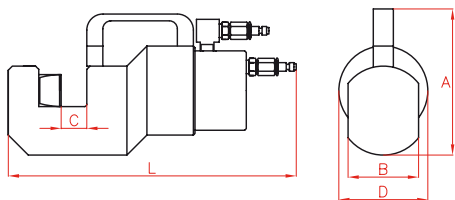
CK0016



CK0116 - CK0130



CK0216 - CK0230 - CK0250



Type **CK**

Capacity **13 - 112 Tn**

Chain **max. 50 mm**

Max. pressure **700 bar**

Model	Replacement Blades	
	Mobile	Fixed
CK0016	CRK16/1	CRK16/2
CK0116	CRK16/1	CRK16/2
CK0130	CRK30/1	CRK30/2
CK0216	CRK16/1	CRK16/2
CK0230	CRK30/1	CRK30/2
CK0250	CRK50/1	CRK50/2

\* maximum ø

Model	Capacity	Oil Cap.	Weight	A	B	C	D	L	Chain*	Strength	Bar*	Strength
LARZEP	kN	cm <sup>3</sup>	kg	mm	mm	mm	mm	mm	mm	by grades	mm	N/mm <sup>2</sup>
CK0016	135	-	5,8	81,5	54	20	68	489	19	28 - 43	19	700
									14	60 - 80	15	1.000
CK0116	135	38	4,8	81,5	54	19,5	68	290	19	28 - 43	19	700
									14	60 - 80	13	1.400
											11	1.600
CK0130	390	182	16,8	183	88	31,5	113	360	30	28 - 43	30	700
									20	60 - 80	25	1.000
CK0216	135	38	8,4	126	54	19,5	81	343	30	28 - 43	20	1.400
									19	28 - 43	17	1.600
											14	60 - 80
CK0230	345	161	16,0	183	88	30	113	412	30	28 - 43	30	700
									20	60 - 80	25	1.000
											17	1.600
CK0250	1.120	842	68,0	228	120	52	207	475	50	28 - 43	50	700
									40	60 - 80	45	1.000
											40	1.400
											35	1.600

## HYDRAULIC CABLE CUTTERS



- ✓ CC0260 model is double acting and is especially recommended for sub-sea applications. Optionally we can supply special seal kits for deep water operation.
- ✓ CC0018, CC0040 and CC0075 models are self contained, with integral built-in pump. These tools are supplied with a relief valve to prevent overload.
- ✓ Single acting models have spring return.
- ✓ Rotating heads for easy operation.
- ✓ Installing replacement blades is a simple operation.
- ✓ All models are provided with a male ball quick coupler AZ3321.
- ✓ CC0190 and CC01120 are equipped with handle.
- ✓ Carry box included for easy transport and tool protection.

**HAB1102**

Battery Powered Portable Hydraulic Pump



P.101

**Z12107**

Air Hydraulic Pump



P.86

**HYDRAULIC CABLE CUTTERS**



Type

**CC**

Capacity

**5 - 43 Tn**

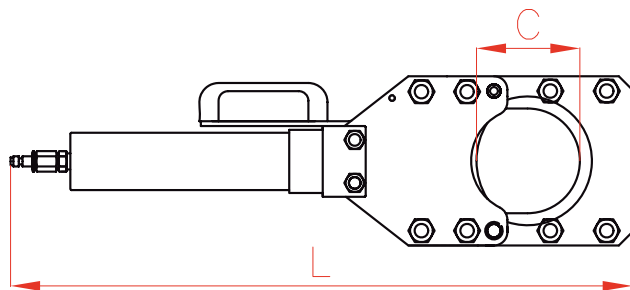
Cable

**max. 120 mm**

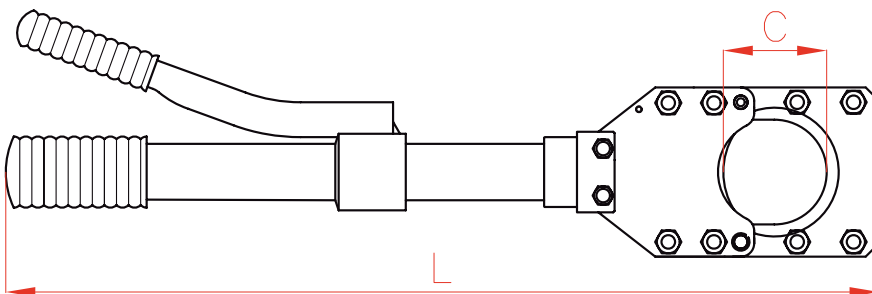
Max. pressure

**700 bar**

**CC0118 - CC0140 - CC0160 - CC0175 - CC0190 - CC01120**



**CC0018 - CC0040 - CC0075**



Model	Replacement Blades
LARZEP	LARZEP
CC0018	CRC18
CC0040	CRC35-40
CC0075	CRC75
CC0118	CRC18
CC0140	CRC35-40
CC0160	CRC0160
CC0175	CRC75
CC0190	CRC0190
CC01120	CRC01120
CC0260	CRC0160

Model	Capacity	Oil Capacity	L	C	Weight	Wire Rope ø (Al)	Cable ø				Wire Rope ø (Steel) <sup>1)</sup>	
							Cable	Telephone	Lead Shielded	Underground	Cable	Wire
LARZEP	kN	cm <sup>3</sup>	mm	mm	kg	mm	mm	mm	mm	mm	mm	
CC0018	70	-	385	19	2,8	18	18	18	18	18	1	
CC0040	135	-	490	41	5,6	40	40	40	40	32	1	
CC0075	70	-	650	77	6,6	40	75	75	75	*	*	
CC0118	70	24	212	18	2,0	18	18	18	18	18	1	
CC0140	135	86	292	40	5,3	40	40	40	40	32	1	
CC0160	437	420	388	64	15,8	60	60	60	60	60	2	
CC0175	70	74	451	75	5,5	40	75	75	75	*	*	
CC0190	109	149	535	90	10,0	35	90	90	90	*	*	
CC01120	109	203	635	120	11,7	35	120	120	120	*	*	
CC0260	390	431	480	64	24,6	60	60	60	60	60	2	

\* This unit is not designed to cut this material. Any attempt to do so may result in personal injury or damage to the unit and will void the warranty.

Shown diameters are only for guidance.

1) Max. Strength 1.800 N/mm<sup>2</sup>

**FLANGE SPREADER**



**FLANGE SPREADER**

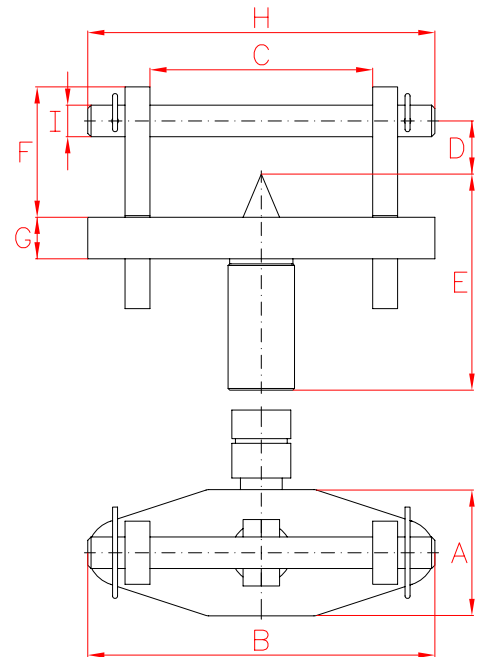


Type **BS**

Capacity **5 - 10 Tn**

Max. pressure **700 bar**

- ✓ 5 and 10 Tn models available.
- ✓ Used for safely opening pipe flanges.
- ✓ Adjustable jaw width from 70 to 226 mm.
- ✓ Ergonomic and lightweight tools.
- ✓ Can be operated individually or in pairs when the diameter of the flange is too big.



Capacity	Stroke	Module	Oil. Cap	Max. Flange thickness	A	B	C (mm)		D	E	F	G	H	I	Weight
Tn	mm	LARZEP	cm <sup>3</sup>	mm	mm	mm	min	max	mm	mm	mm	mm	mm	mm	kg
5	25	<b>BS00502</b>	18	2 x 57	76	209	70	155	32	130	79	25	209	19	4,2
10	55	<b>BS01005</b>	78	2 x 92	126	300	110	226	57	148	115	38	291	30	13,5



HYDRAULIC TOE JACK

HYDRAULIC TOE JACK



Type **AU**

Capacity **20 - 60 Tn**

Max. pressure **700 bar**



- ✓ Compact and lightweight jacks for easy transportation.
- ✓ Load can be lifted with either toe or main plunger.
- ✓ Fitted with relief valve to prevent overloading.
- ✓ Excellent for lifting loads in limited access situations.
- ✓ Pumping handle included.

Capacity	Model	Toe Capacity	Stroke	Length	Width	Toe Height	Closed Height	Weight
Tn	LARZEP	Tn	mm	mm	mm	mm	mm	kg
20	AU02015	8	152	246	121	67	280	15
	AU02030	8	305	246	121	67	456	23
30	AU03015	12	152	273	140	73	281	21
	AU03030	12	305	273	140	73	472	32
60	AU06015	24	152	342	190	73	327	44
	AU06030	24	305	342	190	73	540	65